



BEEP
BEEP
BEEP

DIVISION OF
JIM KENNEDY TV. SALES, INC.

KENNEDY PAGING & MOBILE TELEPHONE

1503 BALTIMORE ST.

DEFIANCE, OHIO 43512

TELEPHONE 419-784-0127

August 30, 1984

*Permit
898*

Mr. Paul Buehrer
Napoleon City Building
Route #24
Napoleon, Ohio 43545

Re: Self Support Tower

Dear Paul:

Please find attached Engineer drawing for our proposed Pi-Rod Tower to be placed behind Huner Realty.

Your fast approval will help us expedite removal of the hazard the present tower is. Not to mention the loss of Mobile phone and Paging Service to Napoleon residence.

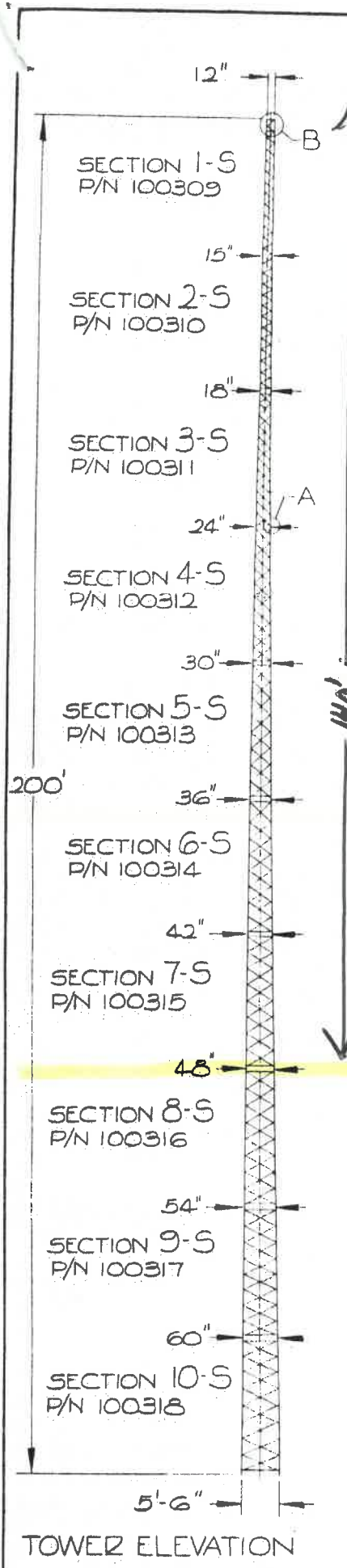
Thanking you in advance for your help.

Sincerely,

Jim Kennedy
Jim Kennedy
President

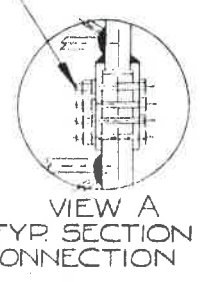
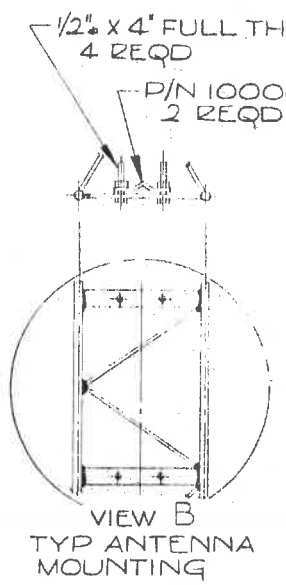
JAK:djk

enclosure



SECTION DATA										
SEC NO.	LEG DIA	BRACE	SPACES	WEIGHT #	SLEEVE		SLEEVE P/N	CONN. BOLTS		
					O.D.	LGTH		NO.	DIA	LGTH
1-5	3/4"	3/8"	12	118	1 5/16"	2 5/8"	100071	2	5/16"	2 1/4"
2-5	7/8"	7/16"	12	154	1 1/2"	3 3/4"	100075	3	3/8"	2 1/2"
3-5	1"	3/8"	12	235	1 3/4"	4 3/8"	100077	3	7/16"	2 3/4"
4-5	1 1/8"	7/16"	10	315	2"	4 3/4"	100079	3	1/2"	3 1/2"
5-5	1 1/4"	1/2"	8	390	2 1/4"	4 3/4"	100081	3	1/2"	3 1/2"
6-5	1 3/8"	9/16"	8	495	2 1/4"	5 1/4"	100083	3	9/16"	3 1/2"
7-5	1 1/2"	5/8"	8	625	2 1/4"	5 1/4"	100083	3	9/16"	3 1/2"
8-5	1 1/2"	3/4"	8	760	2 3/4"	7 1/4"	100085	4	5/8"	4"
9-5	1 3/4"	3/4"	8	950	2 3/4"	7 1/4"	100085	4	5/8"	4"
10-5	1 3/4"	7/8"	8	1170	3 1/4"	8 1/2"	100087	5	5/8"	4 1/2"

GRADE 5 BOLTS AS NOTED



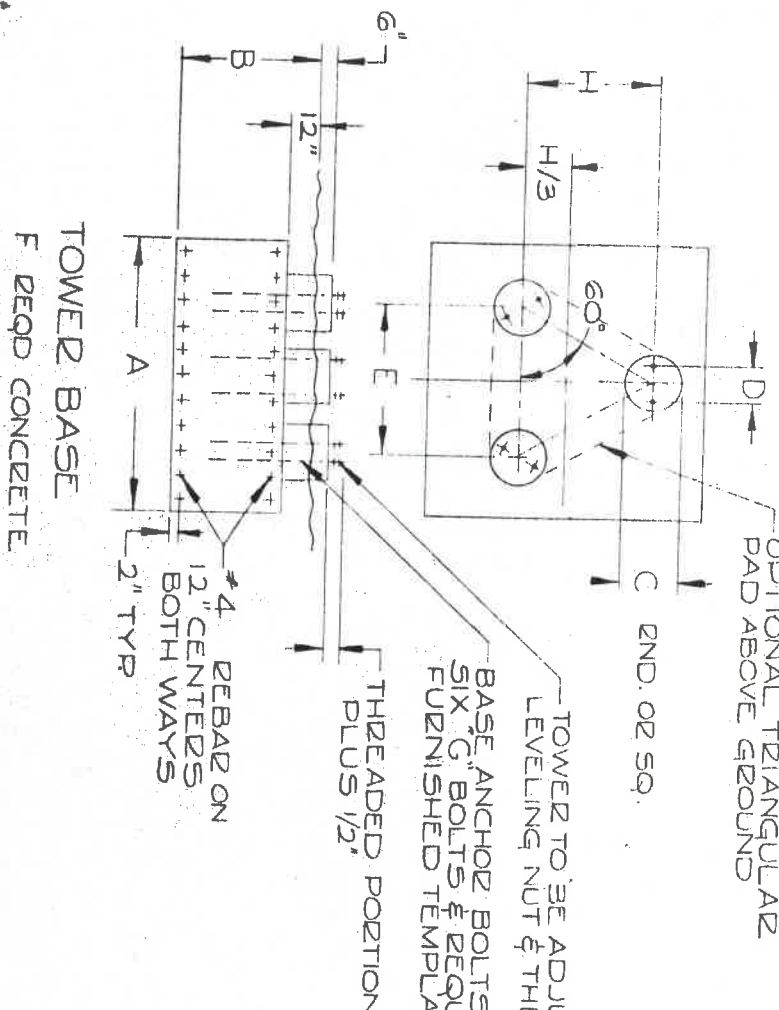
5. ALLOWABLE LOADING - 3.0 FT² AT TOP OF TOWER & 5.0 FT² AT 30' BELOW TOP OF TOWER AT 30 PSF WIND LOAD. ADDITIONAL LOADING MAY BE ACCOMMODATED BY REMOVING TOP SECTIONS OF TOWER.
4. FINISH: HOT DIPPED GALVANIZED AFTER FABRICATION.
3. ALL WELDING TO CONFORM TO AWS SPECIFICATIONS.
2. MATERIAL: (A) MEMBERS 9/16" & LARGER F_y = 50,000 PSI
(B) MEMBERS LESS THAN 9/16" F_y = 36,000 PSI
1. TOWER DESIGN CONFORMS TO E.I.A. STANDARD RS-222-C FOR ZONE "A", WITH WIND LOADING AS NOTED.

GENERAL NOTES

TOWER ELEVATION

CHG LET			DESCRIPTION		DATE	REVISIONS	
NAME			MODEL SSA-2			PART NO	
SELF SUPPORTING			TOWER			PI-ROD, INC.	
APPROVED BY			DR BY	DATE	PLYMOUTH, INDIANA 46563		
REG. ENGINEER			SCALE	~	DWG. NO. 102519-B		
REG. NO.						SHEET 1 OF 2	

TOWER HEIGHT	2000 # SOIL					3000 # SOIL					4000 # SOIL					ANCHOR BOLTS DIA C P/N		
	A	B	C	D	E	A	B	C	D	E	A	B	C	D	E			
20'	2'-6"	3'-6"	9"	3 1/2"	15"	2'-6"	3'-6"	9"	3 1/2"	15"	2'-6"	3'-6"	9"	3 1/2"	15"	.70	5/8"	101266
40'	4'-6"	3'-6"	9"	3 1/2"	18"	4'-3"	3'-6"	9"	3 1/2"	18"	3'-9"	3'-6"	9"	3 1/2"	18"	1.4	5/8"	101266
60'	5'-6"	4'-0"	9"	3 1/2"	24"	5'-3"	4'-0"	9"	3 1/2"	24"	4'-9"	4'-0"	9"	3 1/2"	24"	2.6	3/4"	101267
80'	6'-6"	4'-6"	9"	4"	30"	6'-0"	4'-6"	9"	4"	30"	5'-6"	4'-6"	9"	4"	30"	4.0	3/4"	101267
100'	7'-3"	5'-0"	9"	4 1/2"	36"	6'-6"	5'-0"	9"	4 1/2"	36"	6'-0"	5'-0"	9"	4 1/2"	36"	5.4	7/8"	101268
120'	8'-3"	5'-0"	9"	5"	42"	7'-9"	5'-0"	9"	5"	42"	7'-3"	5'-0"	9"	5"	42"	7.9	1"	101269
140'	9'-0"	5'-6"	12"	5 1/2"	48"	8'-0"	5'-6"	12"	5 1/2"	48"	7'-6"	5'-6"	12"	5 1/2"	48"	9.5	1 1/4"	101269
160'	10'-0"	5'-6"	12"	6"	54"	9'-3"	5'-6"	12"	6"	54"	8'-9"	5'-6"	12"	6"	54"	12.9	1 1/2"	101270
180'	10'-9"	6'-0"	12"	6 1/2"	60"	9'-9"	6'-0"	12"	6 1/2"	60"	9'-0"	6'-0"	12"	6 1/2"	60"	15.2	1 3/4"	101271
200'	11'-9"	6'-0"	18"	7"	66"	10'-9"	6'-0"	18"	7"	66"	10'-3"	6'-0"	18"	7"	66"	19.8	1 5/8"	101272



- TOWER TO BE ADJUSTED BY LEVELING NUT & THEN GROUTED
- BASE ANCHOR BOLTS CONSIST OF SIX G BOLTS & REQUIRES THE FURNISHED TEMPLATE TO INSTALL
- 4 #4 REBAR ON 12" CENTERS BOTH WAYS
- 2" TYP
- THREADED PORTION PLUS 1/2"
- OPTIONAL TRIANGULAR PAD ABOVE GROUND
- C END OR SQ.
- 2000 # SOIL
- 3000 # SOIL
- 4000 # SOIL
- REGD CONCRETE CU. F. YD.
- ANCHOR BOLTS DIA C P/N

TOWER BASE
F REGD CONCRETE

GENERAL NOTES

1. FOUNDATION MAY BE INSTALLED FULL WIDTH TO A POINT 6" ABOVE GRADE IF DESIRED. IF THIS IS DONE, TOP SHOULD BE CROWNED FOR PROPER DRAINAGE.
2. CONCRETE TO BE 3000 PSI MINIMUM IN 28 DAYS.

NAME MODEL SSA-2 TOWER FOUNDATIONS			PI-ROD, INC. PLYMOUTH, INDIANA 46563		
APPROVED BY	DR BY	DATE	SCALE	DWG NO.	102519-B
REG. ENGINEER	REG. NO.				
CHG LET	DESCRIPTION	DATE	REVISIONS		